

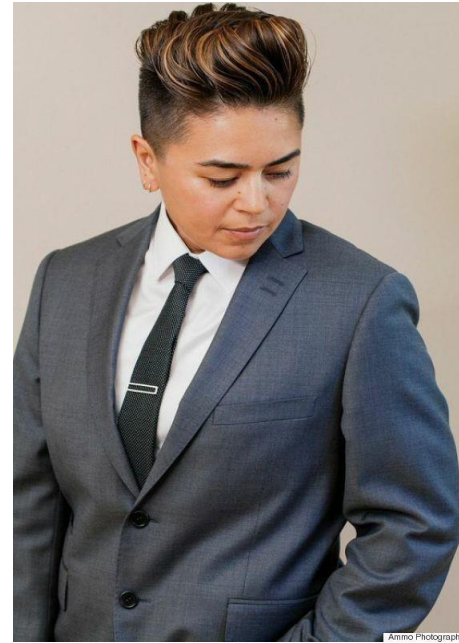
Professional Dress

Professional Dress is NOT AN OPTION!

Your attire reflects who you are as a professional

- Matching two-piece dark colored suit (black, blue, grey)
 - Solid or light stripes
- Tailored shirt/skirt with conservative neckline/length
 - Mild/neutral color
- Conservative tie or bowtie (no “flashy” designs)
- Polished dress shoes that match belt color
 - No sneakers or open-toed shoes
- Dark or neutral socks
- Minimal jewelry, perfume/cologne and makeup
 - Make sure body piercing and tattoo coverage aligns with company culture/standards
- Carry a portfolio, professional bag or simple purse

Professional Dress Options



Business Casual Options

