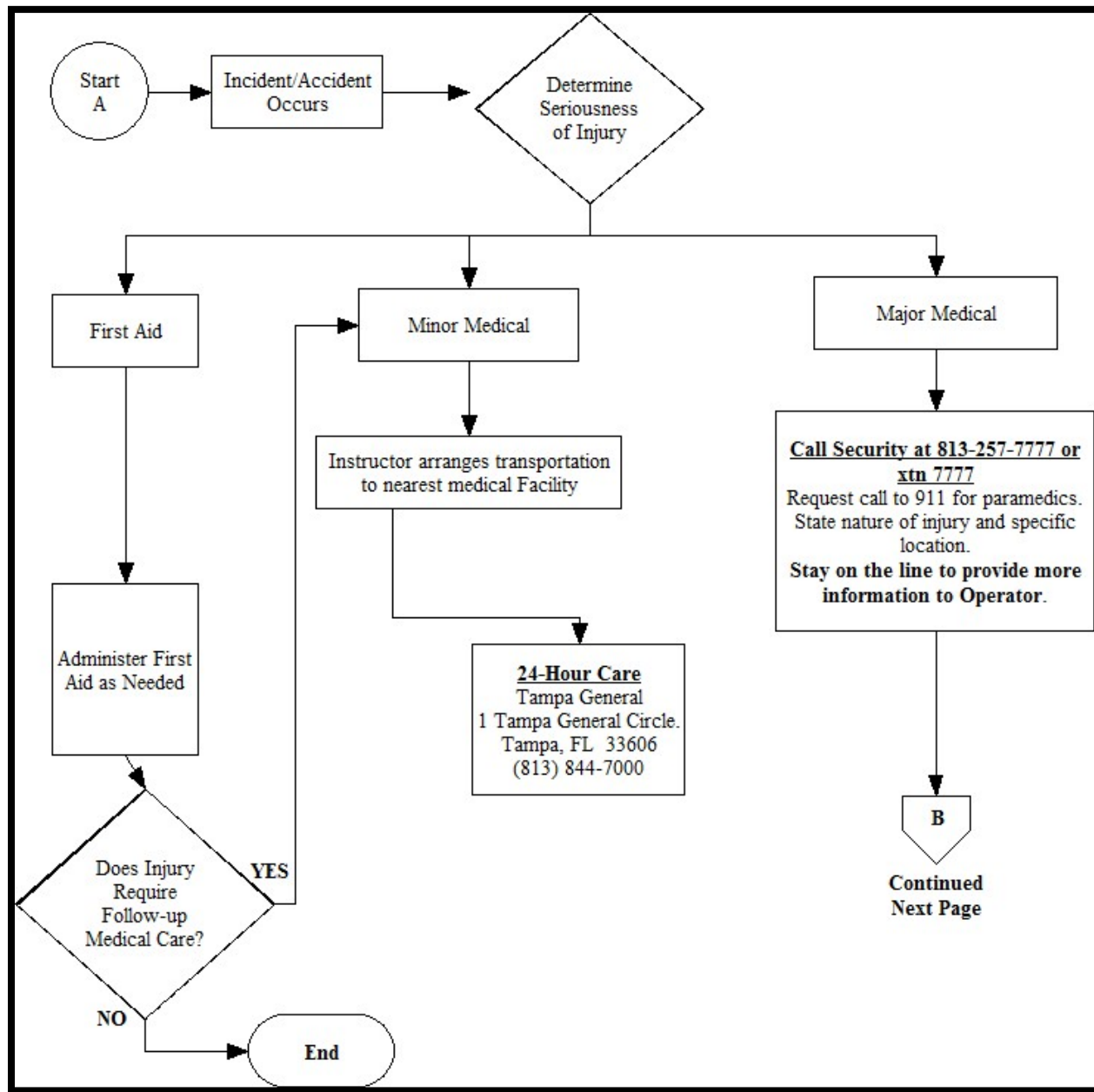


### FIRST STAGE OF RESPONSE TO MEDICAL INCIDENT



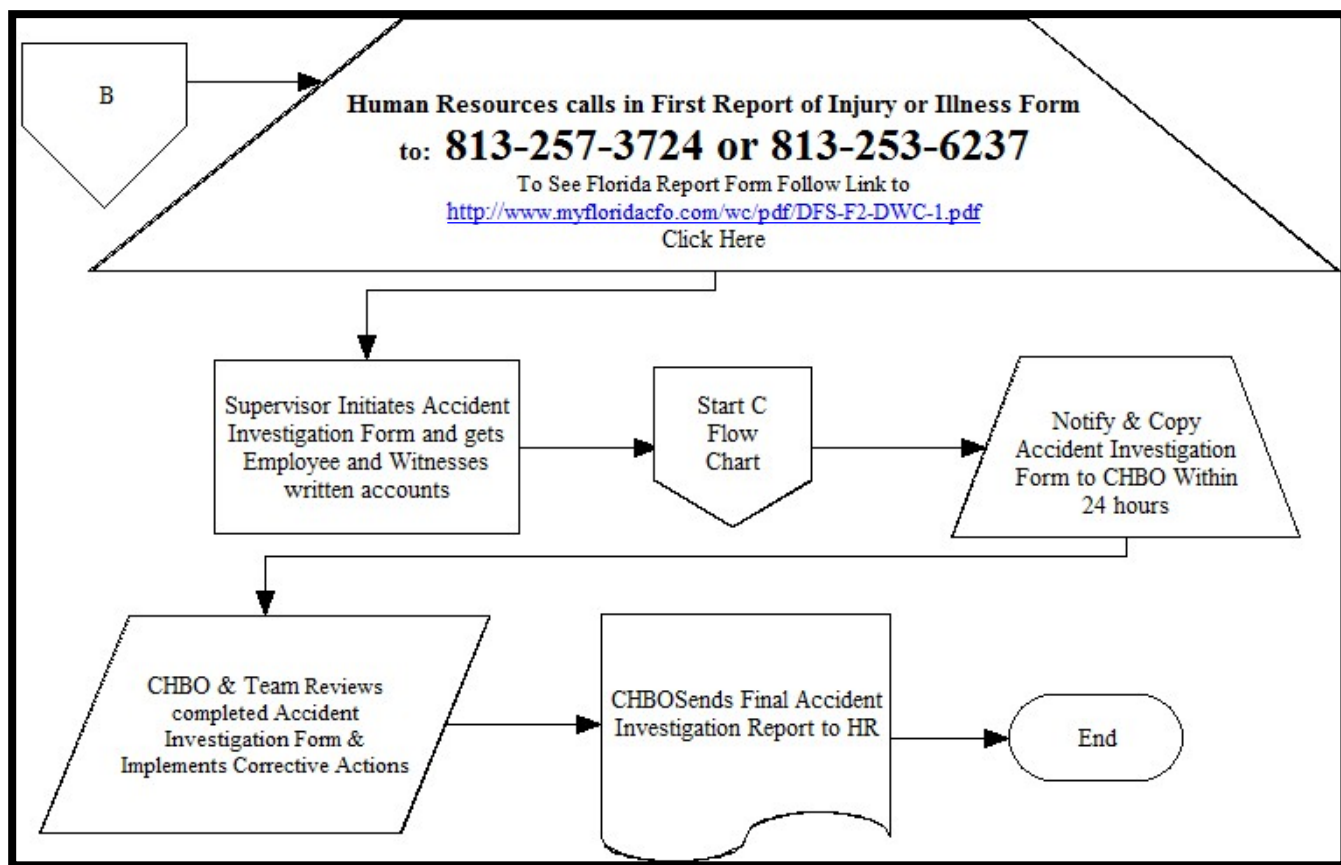
#### Commonly Asked Questions:

Should both Employees and Students be directed to Tampa General for minor medical care? **YES**

What happens if Security does not answer? **Call 911 Directly**

Should I prepare an accident report for minor first aid treatment? **YES**

## SECOND STAGE OF MEDICAL INCIDENT IS TO REPORT TO INSURANCE COMPANY



### Commonly Asked Questions:

When do we report a worker's compensation claim to our insurance company?

Any event that caused or could cause an injury to a UT Faculty, Staff or other Employee.

When do we create an incident report for an injury?

For every Injury or Near-Miss Event

Is it a non-reportable incident when the injured does not seek medical attention?

Yes – This is a Near-Miss Event

Do we report for Temporary Employees and Permanent Employees?

Yes

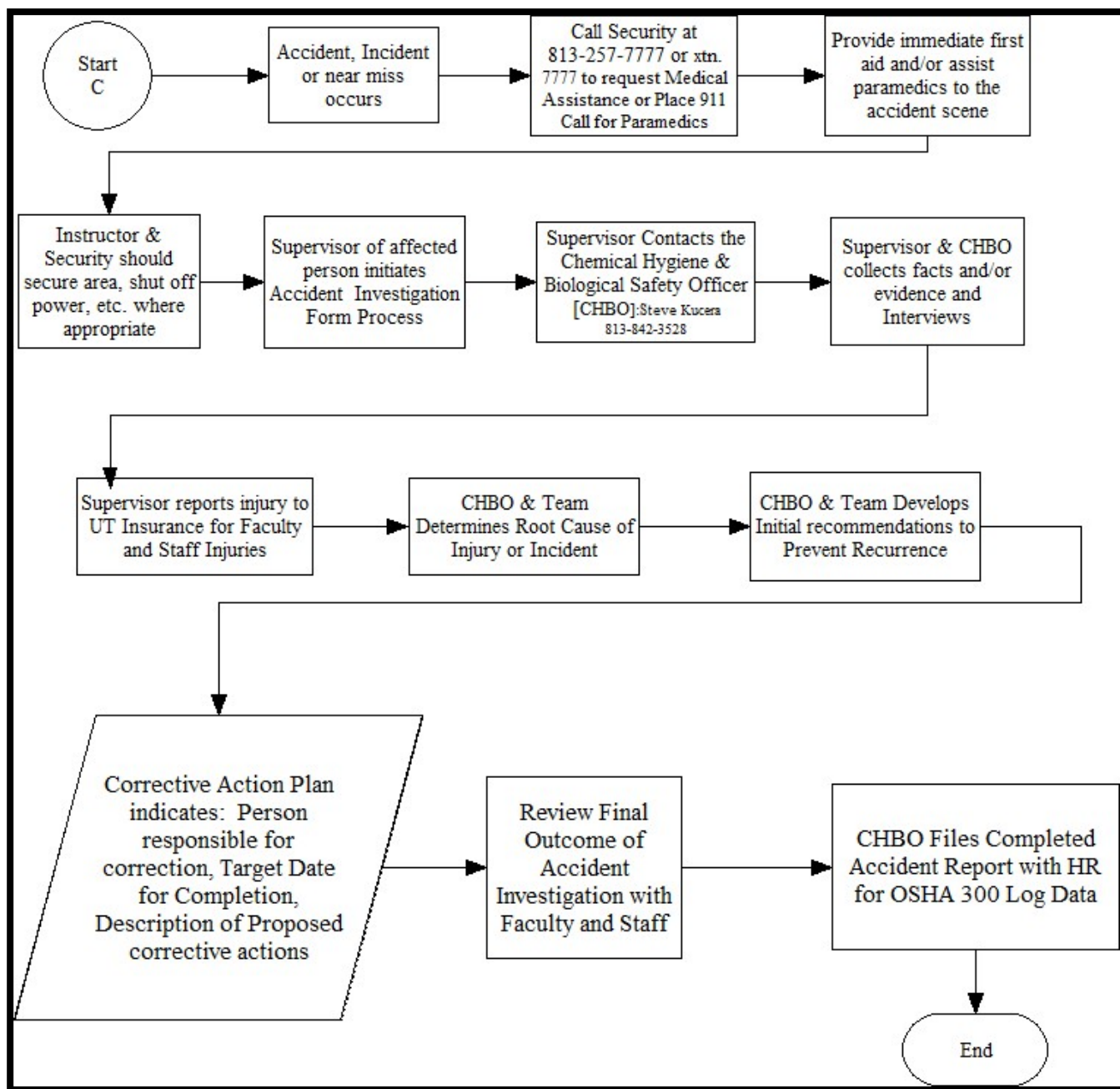
Do we report for Students?

No

What is the critical timing associated with opening a workers comp claim?

Report within 24-Hours [no more than 7 days of injury]

### THIRD STAGE IS TO CREATE AN INCIDENT INVESTIGATION



#### Commonly Asked Questions:

Some incidents, like chemical spills don't involve a person. Who needs to be on the distribution for an incident report for just an incident versus an accident where someone is hurt? **The CHBO.**